

ALLURA COLLECTION BROCHURE

creating better environments

forbo
FLOORING SYSTEMS

ALLURA FOR LIFE

Life is a play with many acts. And every act has its floor to perform on. Whatever life throws at your feet, the new Allura Luxury Vinyl Tiles collection is there to support you every step of the way.

A flooring system that suits any scene imaginable. Carefully designed to be flexible, easily laid, durable and - vitally - to give you the design freedom to bring any interior to life.

Available as glue down and loose lay and a special decibel collection makes that you can choose from a wide offer that suits your needs in every situation.





CONTENT

Collection introductions	06
Allura dryback, flex, click, puzzle collection	08
Product constructions	56
Allura decibel collection	59
Allura decibel construction	84
Allura floorplan inspiration	86
Going Round Moving Forward - environmental impact	88
Dynamics of a Building	92
Allura and other collections	96



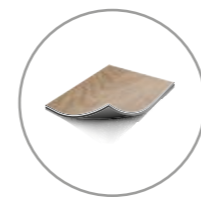
63749 | blue clouds, 63747 | grey clouds, 63533 | light timber

THE TOTAL OFFER IN LUXURY VINYL TILES

The Allura collection has a wide range of options. Besides a broad design offer, you can also choose the installation method. Most designs are available in multiple executions as glue down and loose lay. There is a separate collection for decibel glue down which can also be explored in this brochure.

The possibilities are endless. You can conceive plans that have your signature. All the designs of the first part of the brochure are available in Allura Dryback 0.70 and 0.55 and most as Allura Flex 1.0. A wide selection of designs is also available as Dryback 0.40, Allura Flex 0.55, Allura Click Pro and Allura Puzzle. This offers you the best choice -including circular economy requirements.

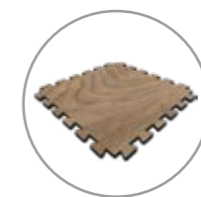
The Allura decibel part in this brochure shows the options for specific needs in a project. Most items are available in both 0.35 and 0.8, some only in 0.8. It is indicated in the table on the product page.



allura® dryback

FULLY ADHERED

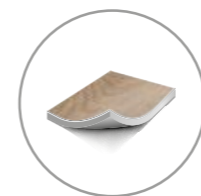
- Total design freedom with the largest choice of shapes and sizes
- Most durable and reliable for applications of any size
- Maximum certainty and performance with a glued down product



allura® puzzle

PUZZLE CONNECTED LOOSE LAY

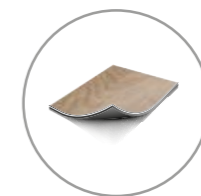
- Highest traffic solution with a long-lasting durable performance and stunning look
- Minimal subfloor preparation, quick to install and ready to use immediately
- Strong and stable puzzle connection between the large tile format, in woods and materials



allura® flex II

LOOSE LAY TACKIFIED

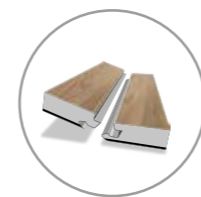
- Easy and quick
- Tackified loose lay
- The stable yet flexible solution for demanding applications of any size
- Special backing for extra comfort and improved acoustics



allura® decibel

LOOSE LAY TACKIFIED

- The extensive range is designed to mix and match colours within the range and create your own unique floor plan
- Easy to remove at end of life for recycling or re-use, minimizing environmental impact
- A perfect balance between the high acoustic properties of 19dB and the outstanding residual indentation performance



allura® click pro

CLICK CONNECTED

- Clickable solution for any area up to 1000 m²
- Suitable for uneven subfloors and 100% adhesive-free
- Balanced high quality product that will continue to perform, year after year



63641 | light serene oak

ALLURA DRYBACK, FLEX^{II}, CLICK, PUZZLE

HOW TO SPECIFY YOUR ORDER

The project requirements dictate which product is most suitable.

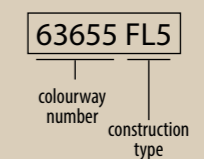
- DR7** – allura dryback wear layer 0.70 mm
- DR5** – allura dryback wear layer 0.55 mm
- DR4** – allura dryback wear layer 0.40 mm
- FL1** – allura flex wear layer 1.0 mm
- FL5** – allura flex wear layer 0.55 mm
- CL5** – allura click pro wear layer 0.55 mm
- PZ7** – allura puzzle wear layer 0.70 mm

The colourway numbers are mentioned below the sample. Add the code above as a suffix after the colourway number to specify your required format of the product. Items with multiple executions (size or shape) each have a different colourway number. Please note that not all designs are available from stock in every product construction.

Example:

When you want the dark twine in Allura Flex with wear layer thickness 0.55 mm. Take the colourway number of dark twine which is 63655 and add FL5 to the number.

This is how you would specify this example order:



GIANT OAK -ALLURA®

Allura	Art. Number	Size	Art. Number	Size	Art. Number	Size
Dryback 0.70	60288DR7	180 x 32 cm	60284DR7	180 x 32 cm	60280DR7	180 x 32 cm
Dryback 0.55	60288DR5	180 x 32 cm	60284DR5	180 x 32 cm	60280DR5	180 x 32 cm
Dryback 0.40	60288DR4	180 x 32 cm	60284DR4	180 x 32 cm	60280DR4	180 x 32 cm
Flex 1.0	60288FL1	150 x 28 cm	60284FL1	150 x 28 cm	60280FL1	150 x 28 cm
Flex 0.55	60288FL5	150 x 28 cm	60284FL5	150 x 28 cm	60280FL5	150 x 28 cm
Click Pro 0.55	60288CL5	150,5 x 23,7 cm	60284CL5	150,5 x 23,7 cm		
Puzzle 0.70			60284PZ7	96 x 96 cm	60280PZ7	96 x 96 cm



60288 | light giant oak



60284 | natural giant oak



60280 | grey giant oak



60288 | light giant oak, 60284 | natural giant oak



60288 | light giant oak, 60284 | natural giant oak

Allura	Art. Number	Size	Art. Number	Size	Art. Number	Size	Art. Number	Size
Dryback 0.70	60305DR7	150 x 28 cm	60300DR7	150 x 28 cm	60302DR7	150 x 28 cm	60306DR7	150 x 28 cm
Dryback 0.55	60305DR5	150 x 28 cm	60300DR5	150 x 28 cm	60302DR5	150 x 28 cm	60306DR5	150 x 28 cm
Dryback 0.40	60305DR4	150 x 28 cm	60300DR4	150 x 28 cm	60302DR4	150 x 28 cm	60306DR4	150 x 28 cm
Flex 1.0	60305FL1	150 x 28 cm	60300FL1	150 x 28 cm	60302FL1	150 x 28 cm	60306FL1	150 x 28 cm
Flex 0.55	60305FL5	150 x 28 cm	60300FL5	150 x 28 cm	60302FL5	150 x 28 cm	60306FL5	150 x 28 cm
Click Pro 0.55	60305CL5	150,5 x 23,7 cm	60300CL5	150,5 x 23,7 cm				



60300 | central oak



60300 | central oak



60305 | light honey oak



60300 | central oak



60302 | deep country oak



60306 | rustic anthracite oak

SERENE OAK -ALLURA®

Allura	Art. Number	Size	Art. Number	Size	Art. Number	Size
Dryback 0.70	63641DR7	150 x 20 cm	63643DR7	150 x 20 cm	63645DR7	150 x 20 cm
Dryback 0.55	63641DR5	150 x 20 cm	63643DR5	150 x 20 cm	63645DR5	150 x 20 cm
Dryback 0.40	63641DR4	150 x 20 cm	63643DR4	150 x 20 cm	63645DR4	150 x 20 cm
Flex 1.0	63641FL1	150 x 20 cm	63643FL1	150 x 20 cm	63645FL1	150 x 20 cm
Flex 0.55	63641FL5	150 x 20 cm	63643FL5	150 x 20 cm	63645FL5	150 x 20 cm
Click Pro 0.55	63641CL5	150,5 x 23,7 cm	63643CL5	150,5 x 23,7 cm		



63641 | light serene oak



63643 | natural serene oak



63645 | dark serene oak



63643 | natural serene oak



63641 | light serene oak

Allura	Art. Number	Size	Art. Number	Size	Art. Number	Size	Art. Number	Size	Art. Number	Size
Dryback 0.70	63406DR7	120 x 20 cm	63412DR7	120 x 20 cm	63533DR7	120 x 20 cm	63535DR7	120 x 20 cm	63408DR7	120 x 20 cm
Dryback 0.55	63406DR5	120 x 20 cm	63412DR5	120 x 20 cm	63533DR5	120 x 20 cm	63535DR5	120 x 20 cm	63408DR5	120 x 20 cm
Dryback 0.40	63406DR4	120 x 20 cm	63412DR4	120 x 20 cm	63533DR4	120 x 20 cm	63535DR4	120 x 20 cm		
Flex 1.0	63406FL1	120 x 20 cm	63412FL1	120 x 20 cm	63533FL1	120 x 20 cm	63535FL1	120 x 20 cm	63408FL1	120 x 20 cm
Flex 0.55	63406FL5	120 x 20 cm	63412FL5	120 x 20 cm	63533FL5	120 x 20 cm	63535FL5	120 x 20 cm		
Click Pro 0.55	63406CL5	121,2 x 18,7 cm	63412CL5	121,2 x 18,7 cm	63533CL5	121,2 x 18,7 cm	63535CL5	121,2 x 18,7 cm		

63706 bleached timber			63712 blond timber	
Allura	Art. Number	Size	Art. Number	Size
Dryback 0.70	63706DR7	75 x 15 cm	63712DR7	75 x 15 cm
Dryback 0.55	63706DR5	75 x 15 cm	63712DR5	75 x 15 cm
Dryback 0.40	63706DR4	75 x 15 cm	63712DR4	75 x 15 cm
Flex 1.0	63706FL1	75 x 15 cm	63712FL1	75 x 15 cm
Flex 0.55	63706FL5	75 x 15 cm	63712FL5	75 x 15 cm



63406 | bleached timber



63412 | blond timber



63408 | grey washed timber



63712 | blond timber



63706 | bleached timber, 63712 | blond timber



63533 | light timber



63535 | natural timber

LIGHT TIMBER GRADIENT -ALLURA®

Allura	Art. Number	Size
Dryback 0.70	63534DR7	120 x 20 cm
Dryback 0.55	63534DR5	120 x 20 cm
Flex 1.0	63534FL1	120 x 20 cm



63534 | light timber gradient

Gradient is random and runs length of the plank.



Allura	Art. Number	Size	Art. Number	Size	Art. Number	Size
Dryback 0.70	63651DR7	150 x 20 cm	63653DR7	150 x 20 cm	63655DR7	150 x 20 cm
Dryback 0.55	63651DR5	150 x 20 cm	63653DR5	150 x 20 cm	63655DR5	150 x 20 cm
Dryback 0.40	63651DR4	150 x 20 cm	63653DR4	150 x 20 cm	63655DR4	150 x 20 cm
Flex 1.0	63651FL1	150 x 20 cm	63653FL1	150 x 20 cm	63655FL1	150 x 20 cm
Flex 0.55	63651FL5	150 x 20 cm	63653FL5	150 x 20 cm	63655FL5	150 x 20 cm
Click Pro 0.55					63655CL5	150,5 x 23,7 cm
Puzzle 0.70	63651PZ7	96 x 96 cm			63655PZ7	96 x 96 cm

63751 | light twine

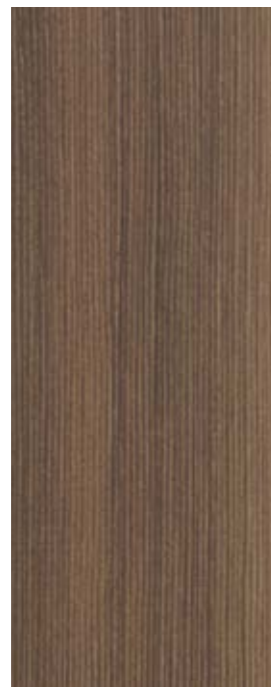
63753 | natural twine

63755 | dark twine

Allura	Art. Number	Size	Art. Number	Size	Art. Number	Size
Dryback 0.70	63751DR7	75 x 25 cm	63753DR7	75 x 25 cm	63755DR7	75 x 25 cm
Dryback 0.55	63751DR5	75 x 25 cm	63753DR5	75 x 25 cm	63755DR5	75 x 25 cm
Dryback 0.40	63751DR4	75 x 25 cm	63753DR4	75 x 25 cm	63755DR4	75 x 25 cm
Flex 1.0	63751FL1	75 x 25 cm	63753FL1	75 x 25 cm	63755FL1	75 x 25 cm
Flex 0.55	63751FL5	75 x 25 cm	63753FL5	75 x 25 cm	63755FL5	75 x 25 cm



63651 | light twine



63653 | natural twine



63655 | dark twine



63751 | light twine, 63655 | dark twine

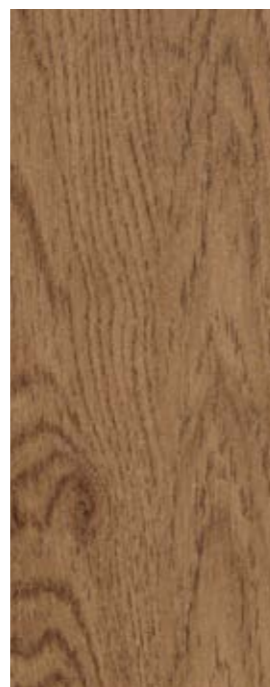
ELEGANT OAK -ALLURA®

Allura	Art. Number	Size	Art. Number	Size	Art. Number	Size
Dryback 0.70	60064DR7	120 x 20 cm	60065DR7	120 x 20 cm	60068DR7	120 x 20 cm
Dryback 0.55	60064DR5	120 x 20 cm	60065DR5	120 x 20 cm	60068DR5	120 x 20 cm
Dryback 0.40	60064DR4	120 x 20 cm	60065DR4	120 x 20 cm	60068DR4	120 x 20 cm
Flex 1.0	60064FL1	120 x 20 cm	60065FL1	120 x 20 cm	60068FL1	120 x 20 cm
Flex 0.55	60064FL5	120 x 20 cm	60065FL5	120 x 20 cm	60068FL5	120 x 20 cm
Click Pro 0.55	60064CL5	121,2 x 18,7 cm				
Puzzle 0.70			60065PZ7	96 x 96 cm		

60165 | honey elegant oak

60168 | amber elegant oak

Allura	Art. Number	Size	Art. Number	Size
Dryback 0.70	60165DR7	75 x 15 cm	60168DR7	75 x 15 cm
Dryback 0.55	60165DR5	75 x 15 cm	60168DR5	75 x 15 cm
Dryback 0.40	60165DR4	75 x 15 cm	60168DR4	75 x 15 cm
Flex 1.0	60165FL1	75 x 15 cm	60168FL1	75 x 15 cm
Flex 0.55	60165FL5	75 x 15 cm	60168FL5	75 x 15 cm



60064 | whitewash elegant oak

60065 | honey elegant oak

60068 | amber elegant oak



60064 | whitewash elegant oak



60168 | amber elegant oak

COLLAGE OAK -ALLURA®

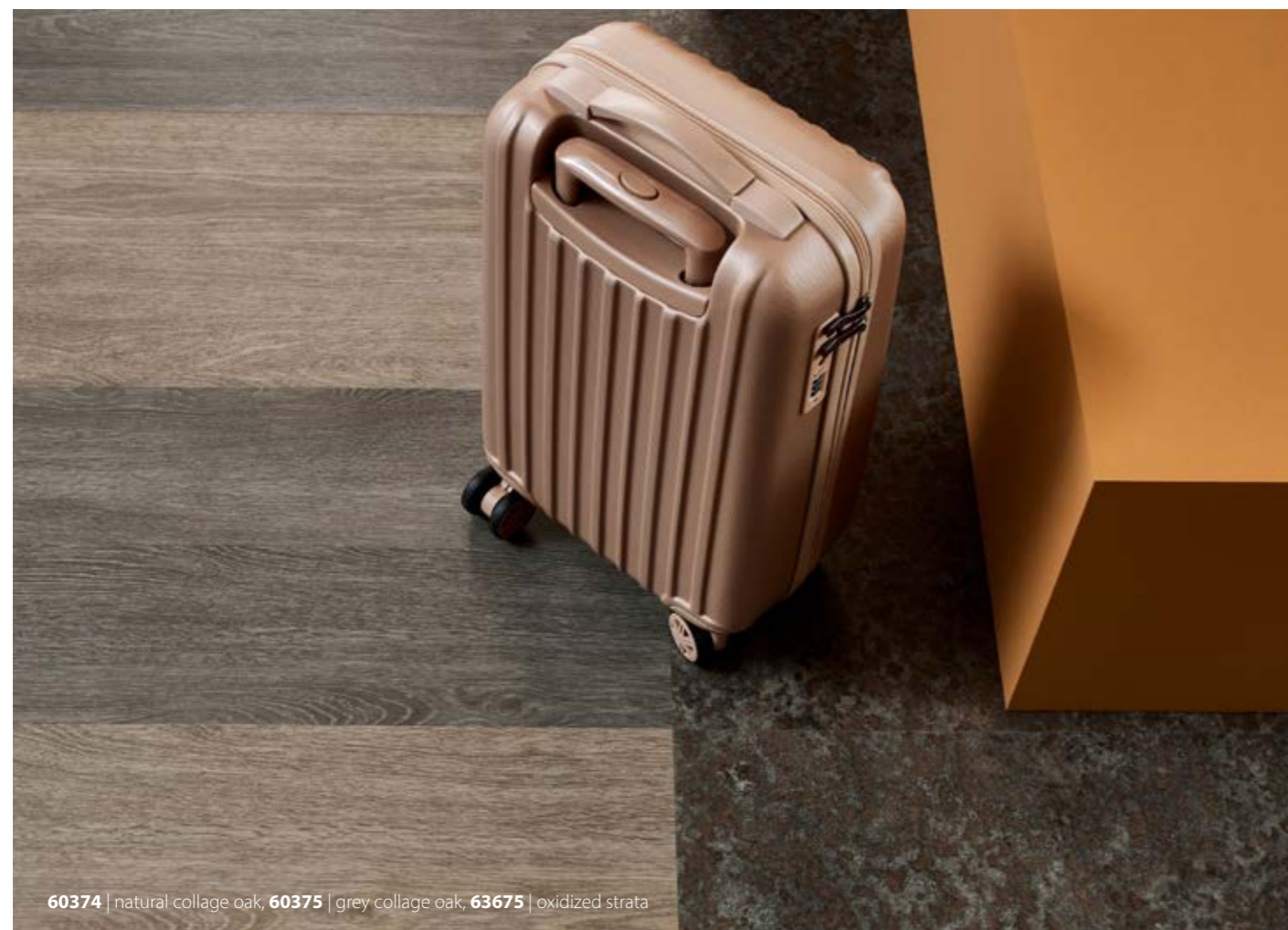
Allura	Art. Number	Size	Art. Number	Size
Dryback 0.70	60374DR7	120 x 20 cm	60375DR7	120 x 20 cm
Dryback 0.55	60374DR5	120 x 20 cm	60375DR5	120 x 20 cm
Dryback 0.40	60374DR4	120 x 20 cm	60375DR4	120 x 20 cm
Flex 1.0	60374FL1	120 x 20 cm	60375FL1	120 x 20 cm
Flex 0.55	60374FL5	120 x 20 cm	60375FL5	120 x 20 cm



60374 | natural collage oak



60375 | grey collage oak



60374 | natural collage oak, 60375 | grey collage oak, 63675 | oxidized strata



60375 | grey collage oak

BLEACHED RUSTIC PINE -ALLURA®

WHITE RAW TIMBER -ALLURA®

Allura	Art. Number	Size
Dryback 0.70	60084DR7	120 x 20 cm
Dryback 0.55	60084DR5	120 x 20 cm
Dryback 0.40	60084DR4	120 x 20 cm
Flex 1.0	60084FL1	120 x 20 cm
Flex 0.55	60084FL5	120 x 20 cm



60084 | bleached rustic pine



60084 | bleached rustic pine

Allura	Art. Number	Size
Dryback 0.70	60151DR7	120 x 20 cm
Dryback 0.55	60151DR5	120 x 20 cm
Dryback 0.40	60151DR4	120 x 20 cm
Flex 1.0	60151FL1	120 x 20 cm
Flex 0.55	60151FL5	120 x 20 cm



60151 | white raw timber



60151 | white raw timber

PURE OAK; STEAMED OAK -ALLURA®

Allura	Art. Number	Size	Art. Number	Size
Dryback 0.70	60295DR7	120 x 20 cm	60293DR7	120 x 20 cm
Dryback 0.55	60295DR5	120 x 20 cm	60293DR5	120 x 20 cm
Dryback 0.40	60295DR4	120 x 20 cm	60293DR4	120 x 20 cm
Flex 1.0	60295FL1	120 x 20 cm	60293FL1	120 x 20 cm
Flex 0.55	60295FL5	120 x 20 cm	60293FL5	120 x 20 cm



60295 | pure oak



60293 | steamed oak



60293 | steamed oak



60293 | steamed oak

AUTUMN OAK -ALLURA®

Allura	Art. Number	Size	Art. Number	Size
Dryback 0.70	60350DR7	100 x 15 cm	60356DR7	100 x 15 cm
Dryback 0.55	60350DR5	100 x 15 cm	60356DR5	100 x 15 cm
Dryback 0.40	60350DR4	100 x 15 cm	60356DR4	100 x 15 cm
Flex 1.0	60350FL1	100 x 15 cm	60356FL1	100 x 15 cm
Flex 0.55	60350FL5	100 x 15 cm	60356FL5	100 x 15 cm
Click Pro 0.55	60350CL5	121,2 x 18,7 cm	60356CL5	121,2 x 18,7 cm



60350 | white autumn oak



60356 | grey autumn oak



60350 | white autumn oak



60350 | white autumn oak

WAXED OAK; BLACKENED OAK -ALLURA®

Allura	Art. Number	Size	Art. Number	Size
Dryback 0.70	60063DR7	100 x 15 cm	60061DR7	100 x 15 cm
Dryback 0.55	60063DR5	100 x 15 cm	60061DR5	100 x 15 cm
Dryback 0.40	60063DR4	100 x 15 cm	60061DR4	100 x 15 cm
Flex 1.0	60063FL1	100 x 15 cm	60061FL1	100 x 15 cm
Flex 0.55	60063FL5	100 x 15 cm	60061FL5	100 x 15 cm



60063 | waxed oak



60061 | blackened oak



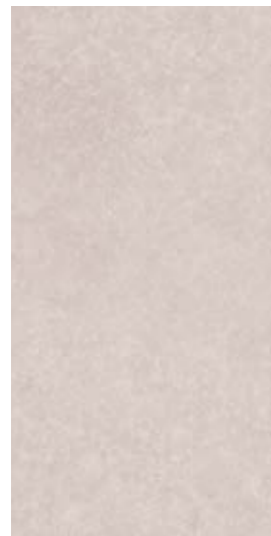
60063 | waxed oak, **60061** | blackened oak



60063 | waxed oak, **60061** | blackened oak

SPECKLED CERAMIC -ALLURA®

Allura	Art. Number	Size	Art. Number	Size	Art. Number	Size
Dryback 0.70	63722DR7	100 x 50 cm	63724DR7	100 x 50 cm	63726DR7	100 x 50 cm
Dryback 0.55	63722DR5	100 x 50 cm	63724DR5	100 x 50 cm	63726DR5	100 x 50 cm
Dryback 0.40	63722DR4	100 x 50 cm	63724DR4	100 x 50 cm	63726DR4	100 x 50 cm
Flex 1.0	63722FL1	100 x 50 cm	63724FL1	100 x 50 cm	63726FL1	100 x 50 cm
Flex 0.55	63722FL5	100 x 50 cm	63724FL5	100 x 50 cm	63726FL5	100 x 50 cm



63722 | pale speckeld ceramic 63724 | rust speckeld ceramic 63726 | iron speckeld ceramic



63722 | pale speckeld ceramic



63722 | pale speckeld ceramic, 63724 | rust speckeld ceramic

Allura	Art. Number	Size	Art. Number	Size
Dryback 0.70	63675DR7	100 x 100 cm	63673DR7	100 x 100 cm
Dryback 0.55	63675DR5	100 x 100 cm	63673DR5	100 x 100 cm
Dryback 0.40	63675DR4	100 x 100 cm		
Flex 1.0	63675FL1	100 x 100 cm	63673FL1	100 x 100 cm
Flex 0.55	63675FL5	100 x 100 cm	63673FL5	100 x 100 cm
Puzzle 0.70	63675PZ7	96 x 96 cm	63673PZ7	96 x 96 cm



63675 | oxidized strata



63673 | corroded strata



63675 | oxidized strata



63675 | oxidized strata, **63722** | pale speckled ceramic, **60356** | grey autumn oak

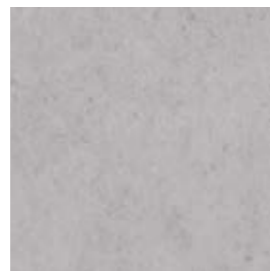
Allura	Art. Number	Size	Art. Number	Size	Art. Number	Size	Art. Number	Size
Dryback 0.70	63634DR7	50 x 50 cm	63636DR7	50 x 50 cm	63632DR7	50 x 50 cm	63638DR7	50 x 50 cm
Dryback 0.55	63634DR5	50 x 50 cm	63636DR5	50 x 50 cm	63632DR5	50 x 50 cm	63638DR5	50 x 50 cm
Dryback 0.40	63634DR4	50 x 50 cm	63636DR4	50 x 50 cm	63632DR4	50 x 50 cm		
Flex 1.0	63634FL1	50 x 50 cm	63636FL1	50 x 50 cm	63632FL1	50 x 50 cm	63638FL1	50 x 50 cm
Flex 0.55	63634FL5	50 x 50 cm	63636FL5	50 x 50 cm	63632FL5	50 x 50 cm	63638FL5	50 x 50 cm
Click Pro 0.55	63634CL5	60 x 31,7 cm	63636CL5	60 x 31,7 cm	63632CL5	60 x 31,7 cm		
Puzzle 0.70	63634PZ7	96 x 96 cm	63636PZ7	96 x 96 cm				



63634 | sand cement



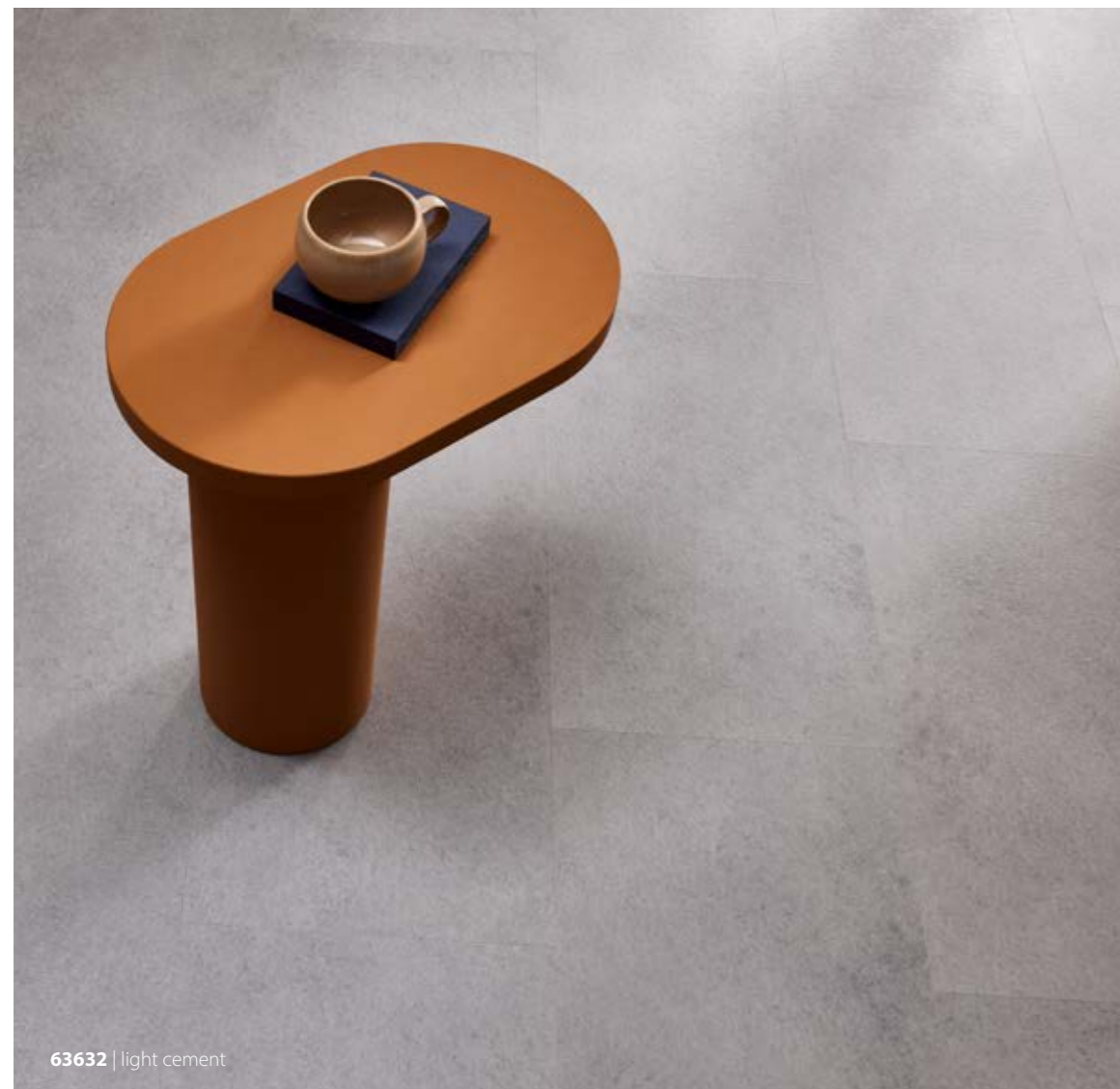
63636 | canyon cement



63632 | light cement



63638 | rock cement



63632 | light cement



63632 | light cement

CEMENT TRAPEZOID -ALLURA®

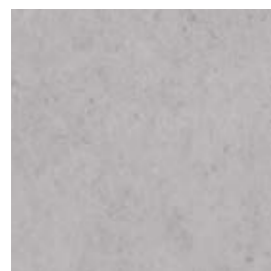
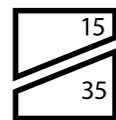
Allura	Art. Number	Size	Art. Number	Size	Art. Number	Size	Art. Number	Size
Dryback 0.70	63734DR7	50 x 50 cm	63736DR7	50 x 50 cm	63732DR7	50 x 50 cm	63738DR7	50 x 50 cm
Dryback 0.55	63734DR5	50 x 50 cm	63736DR5	50 x 50 cm	63732DR5	50 x 50 cm	63738DR5	50 x 50 cm



63734 | sand cement



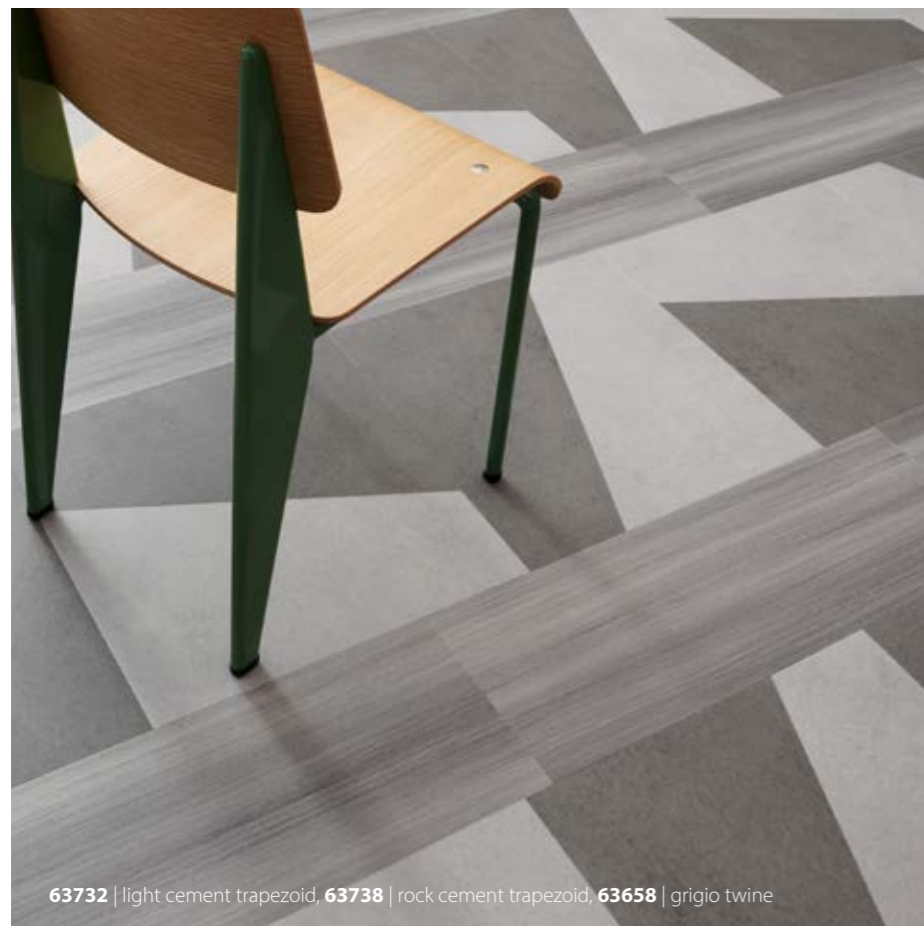
63736 | canyon cement



63732 | light cement



63738 | rock cement



63732 | light cement trapezoid, 63738 | rock cement trapezoid, 63658 | grigio twine



63732 | light cement trapezoid, 63738 | rock cement trapezoid, 63658 | grigio twine

Allura	Art. Number	Size	Art. Number	Size
Dryback 0.70	63659DR7	75 x 25 cm	63658DR7	75 x 25 cm
Dryback 0.55	63659DR5	75 x 25 cm	63658DR5	75 x 25 cm
Dryback 0.40	63659DR4	75 x 25 cm	63658DR4	75 x 25 cm
Flex 1.0	63659FL1	75 x 25 cm	63658FL1	75 x 25 cm
Flex 0.55	63659FL5	75 x 25 cm	63658FL5	75 x 25 cm
Puzzle 0.70			63658PZ7	96 x 96 cm



63659 | shell twine



63658 | grigio twine



63632 | light cement, 63658 | grigio twine



63659 | shell twine

CONCRETE -ALLURA®

Allura	Art. Number	Size	Art. Number	Size	Art. Number	Size
Dryback 0.70	62523DR7	50 x 50 cm	62522DR7	50 x 50 cm	62418DR7	50 x 50 cm
Dryback 0.55	62523DR5	50 x 50 cm	62522DR5	50 x 50 cm	62418DR5	50 x 50 cm
Dryback 0.40	62523DR4	50 x 50 cm	62522DR4	50 x 50 cm	62418DR4	50 x 50 cm
Flex 1.0	62523FL1	50 x 50 cm	62522FL1	50 x 50 cm	62418FL1	50 x 50 cm
Flex 0.55	62523FL5	50 x 50 cm	62522FL5	50 x 50 cm	62418FL5	50 x 50 cm
Click Pro 0.55	62523CL5	60 x 31,7 cm	62522CL5	60 x 31,7 cm	62418CL5	60 x 31,7 cm
Puzzle 0.70			62522PZ7	96 x 96 cm	62418PZ7	96 x 96 cm

62513 | grigio concrete

62512 | natural concrete

62518 | charcoal concrete

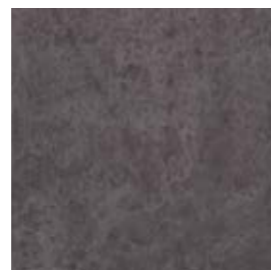
Allura	Art. Number	Size	Art. Number	Size	Art. Number	Size
Dryback 0.70	62513DR7	100 x 100 cm	62512DR7	100 x 100 cm	62518DR7	100 x 100 cm
Dryback 0.55	62513DR5	100 x 100 cm	62512DR5	100 x 100 cm	62518DR5	100 x 100 cm
Dryback 0.40	62513DR4	100 x 100 cm	62512DR4	100 x 100 cm	62518DR4	100 x 100 cm
Flex 1.0	62513FL1	100 x 100 cm	62512FL1	100 x 100 cm	62518FL1	100 x 100 cm
Flex 0.55	62513FL5	100 x 100 cm	62512FL5	100 x 100 cm	62518FL5	100 x 100 cm



62523 | grigio concrete



62522 | natural concrete



62418 | charcoal concrete



62512 | natural concrete



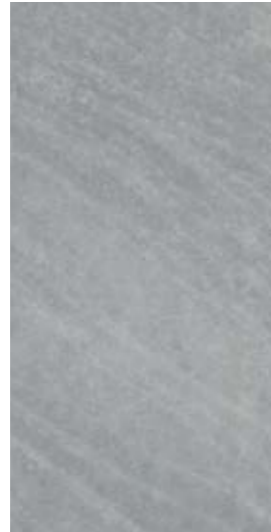
62512 | natural concrete

NATURAL STONE -ALLURA®

Allura	Art. Number	Size	Art. Number	Size	Art. Number	Size
Dryback 0.70	63691DR7	100 x 50 cm	63693DR7	100 x 50 cm	63695DR7	100 x 50 cm
Dryback 0.55	63691DR5	100 x 50 cm	63693DR5	100 x 50 cm	63695DR5	100 x 50 cm
Flex 1.0	63691FL1	100 x 50 cm	63693FL1	100 x 50 cm	63695FL1	100 x 50 cm



63691 | pink natural stone



63693 | cool natural stone



63695 | warm natural stone



63691 | pink natural stone



63695 | warm natural stone

Allura	Art. Number	Size	Art. Number	Size	Art. Number	Size	Art. Number	Size	Art. Number	Size	Art. Number	Size
Dryback 0.70	63661DR7	75 x 15 cm	63662DR7	75 x 15 cm	63663DR7	75 x 15 cm	63664DR7	75 x 15 cm	63665DR7	75 x 15 cm	63666DR7	75 x 15 cm
Dryback 0.55	63661DR5	75 x 15 cm	63662DR5	75 x 15 cm	63663DR5	75 x 15 cm	63664DR5	75 x 15 cm	63665DR5	75 x 15 cm	63666DR5	75 x 15 cm
Flex 1.0	63661FL1	75 x 15 cm	63662FL1	75 x 15 cm	63663FL1	75 x 15 cm	63664FL1	75 x 15 cm	63665FL1	75 x 15 cm	63666FL1	75 x 15 cm



63661 | natural ash



63662 | ochre ash



63663 | terra ash



63664 | sage ash



63665 | forest ash



63666 | indigo ash



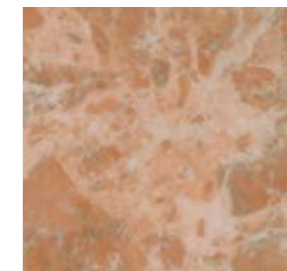
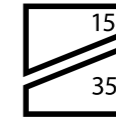
63662 | ochre ash, 63663 | terra ash, 63666 | indigo ash

Allura	Art. Number	Size	Art. Number	Size	Art. Number	Size	Art. Number	Size
Dryback 0.70	63688DR7	50 x 50 cm	63682DR7	50 x 50 cm	63686DR7	50 x 50 cm	63684DR7	50 x 50 cm
Dryback 0.55	63688DR5	50 x 50 cm	63682DR5	50 x 50 cm	63686DR5	50 x 50 cm	63684DR5	50 x 50 cm
Flex 1.0	63688FL1	50 x 50 cm	63682FL1	50 x 50 cm	63686FL1	50 x 50 cm	63684FL1	50 x 50 cm

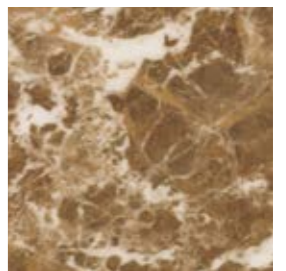
63788 peach marble			63782 ochre marble		63786 terra marble		63784 forest marble	
Allura	Art. Number	Size	Art. Number	Size	Art. Number	Size	Art. Number	Size
Dryback 0.70	63788DR7	50 x 50 cm	63782DR7	50 x 50 cm	63786DR7	50 x 50 cm	63784DR7	50 x 50 cm
Dryback 0.55	63788DR5	50 x 50 cm	63782DR5	50 x 50 cm	63786DR5	50 x 50 cm	63784DR5	50 x 50 cm



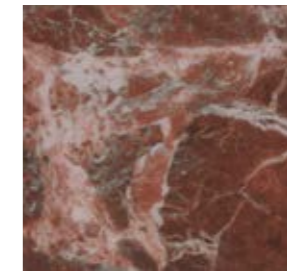
63788 | peach marble trapezoid, 63786 | terra marble trapezoid, 63663 | terra ash



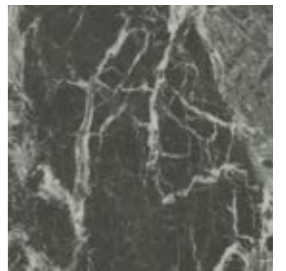
63688 | peach marble



63682 | ochre marble



63686 | terra marble



63684 | forest marble



63684 | forest marble

Allura	Art. Number	Size	Art. Number	Size	Art. Number	Size
Dryback 0.70	63845DR7	75 x 25 cm	63841DR7	75 x 25 cm	63843DR7	75 x 25 cm
Dryback 0.55	63845DR5	75 x 25 cm	63841DR5	75 x 25 cm	63843DR5	75 x 25 cm
Flex 1.0	63845FL1	75 x 25 cm	63841FL1	75 x 25 cm	63843FL1	75 x 25 cm

63745 | magical sky

63741 | calming sky

63743 | dreamy sky

Allura	Art. Number	Size	Art. Number	Size	Art. Number	Size
Dryback 0.70	63745DR7	100 x 50 cm	63741DR7	100 x 50 cm	63743DR7	100 x 50 cm
Dryback 0.55	63745DR5	100 x 50 cm	63741DR5	100 x 50 cm	63743DR5	100 x 50 cm
Flex 1.0	63745FL1	100 x 50 cm	63741FL1	100 x 50 cm	63743FL1	100 x 50 cm



63845 | magical sky



63841 | calming sky



63843 | dreamy sky



63845 | magical sky

Allura	Art. Number	Size	Art. Number	Size
Dryback 0.70	63849DR7	75 x 25 cm	63847DR7	75 x 25 cm
Dryback 0.55	63849DR5	75 x 25 cm	63847DR5	75 x 25 cm
Flex 1.0	63849FL1	75 x 25 cm	63847FL1	75 x 25 cm

63749 | blue clouds

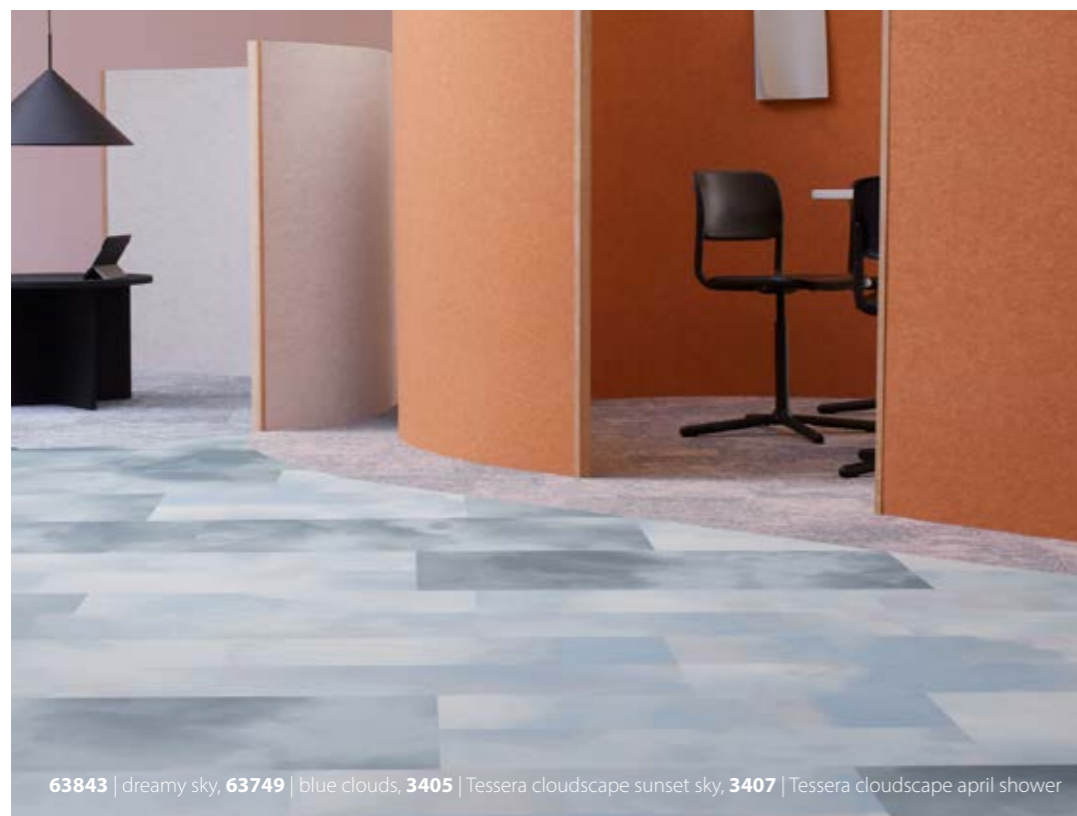
63747 | grey clouds

Allura	Art. Number	Size	Art. Number	Size
Dryback 0.70	63749DR7	100 x 50 cm	63747DR7	100 x 50 cm
Dryback 0.55	63749DR5	100 x 50 cm	63747DR5	100 x 50 cm
Flex 0.55	63749FL1	100 x 50 cm	63747FL1	100 x 50 cm



63849 | blue clouds

63847 | grey clouds



63843 | dreamy sky, 63749 | blue clouds, 3405 | Tessera cloudscape sunset sky, 3407 | Tessera cloudscape april shower

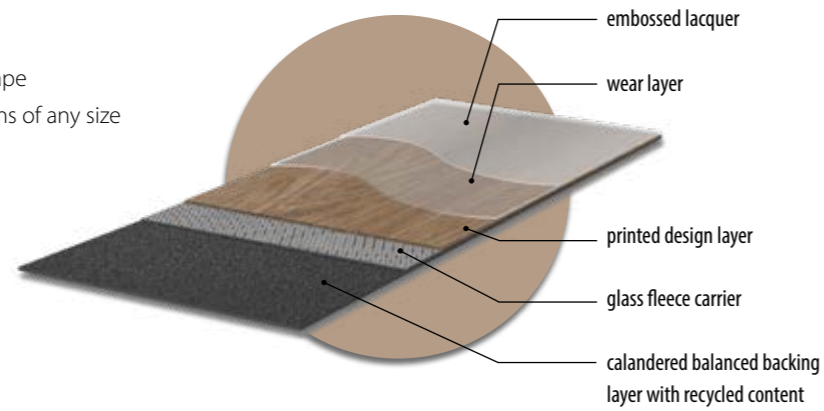


63666 | indigo ash, 63749 | blue clouds, 60084 | bleached rustic pine

allura® dryback

FULLY ADHERED

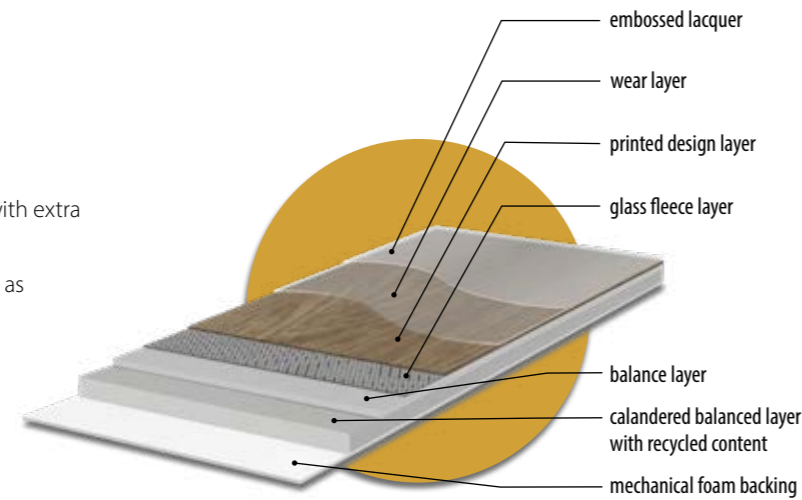
- Largest choice in design, colour, size and shape
- Most durable, reliable product for applications of any size
- Maximum certainty and performance with a glued down product



allura® flex II

LOOSE LAY TACKIFIED

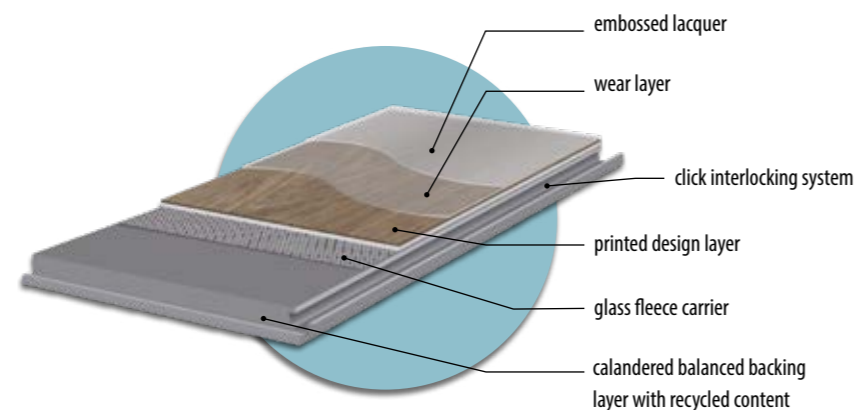
- Easy and quick
- High quality, dimensionally stable product with extra balance layer.
- Provides answers to key issues of today such as limiting valuable downtime and circular economy ready



allura® click pro

CLICK CONNECTED

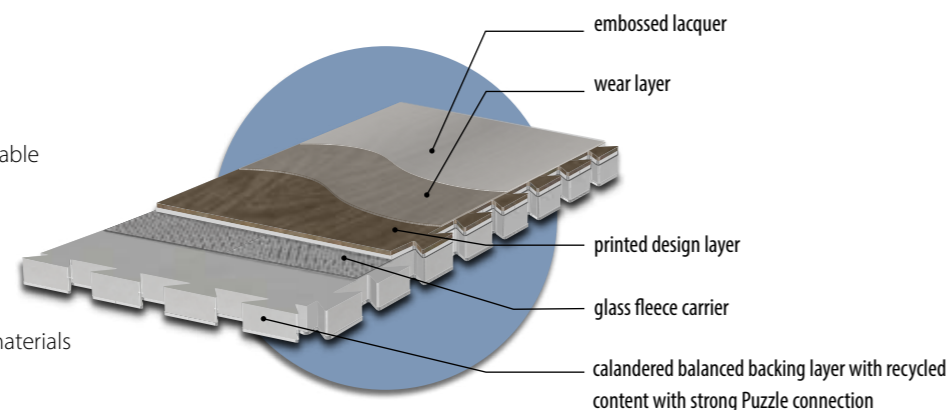
- Clickable solution for any area up to 1.000 m²
- Suitable for use with uneven subfloor and is genuinely adhesive free
- Possible to take out and re-use the floor



allura® puzzle

PUZZLE CONNECTED LOOSE LAY

- Highest traffic solution with a long-lasting durable performance and stunning look
- Minimal subfloor preparation, quick to install and ready to use immediately
- Strong and stable puzzle connection between the large tile format, in woods and materials



Technical specifications

Allura Dryback, Allura Click Pro and Allura Puzzle meet the requirements of EN ISO 10582 / Allura Flex® meets the requirements of EN 651.

		Allura 0.70	Allura 0.55	Allura 0.40	Allura Flex® 1.00	Allura Flex® 0.55	Allura Click Pro	Allura Puzzle
Total thickness	EN-ISO 24346	2.5 mm	2.2 mm	2.0 mm	5 mm	4 mm	5 mm	5 mm
Wear layer thickness	EN-ISO 24340	0.70 mm	0.55 mm	0.40 mm	1 mm	0.55 mm	0.55 mm	0.70 mm
Collection size		87	87	52	79	54	20	12
Domestic use	EN-ISO 10874	Class 23	Class 23	Class 23	Class 23	Class 23	Class 23	Class 23
Commercial use	EN-ISO 10874	Class 34	Class 33	Class 32	Class 34	Class 33	Class 33	Class 34
Light industrial use	EN-ISO 10874	Class 43	Class 42	Class 41	Class 42	Class 42	Class 42	Class 43
Squareness and straightness	EN-ISO 24342	< 400 mm / < 0.25 mm / > 400 mm / < 0.35 mm	< 400 mm / < 0.25 mm / > 400 mm / < 0.35 mm	< 400 mm / < 0.25 mm / > 400 mm / < 0.35 mm	< 400 mm / < 0.25 mm / > 400 mm / < 0.35 mm	< 400 mm / < 0.25 mm / > 400 mm / < 0.35 mm	< 400 mm / < 0.25 mm / > 400 mm / < 0.35 mm	< 400 mm / < 0.25 mm / > 400 mm / < 0.35 mm
Total weight	ISO 23997	3600 g/m ²	3150 g/m ²	2850 g/m ²	6300 g/m ²	5100 g/m ²	8300 g/m ²	7900 g/m ²
Wearlayer binder content	EN-ISO 10582	Type 1	Type 1	Type 1	Type 1	Type 1	Type 1	Type 1
Castor chair continuous use	ISO 4918	Pass	Pass	Pass	Pass	Pass	Pass	Pass
Slip resistance (ramp test)	DIN 51130	R10	R10	R10	R10	R10	R10	R10
Acoustical impact noise reduction	EN-ISO 717-2	6 dB	6 dB	5 dB	14 dB	14 dB	7 dB / 15 dB in combination with Forbo underlay	7 dB
Residual indentation Typical value	EN-ISO 24343-1	≤ 0.10 mm ~ 0.04 mm	≤ 0.10 mm ~ 0.04 mm	≤ 0.10 mm ~ 0.04 mm	≤ 0.20 mm ~ 0.10 mm	≤ 0.20 mm ~ 0.10 mm	≤ 0.10 mm ~ 0.05 mm	≤ 0.10 mm ~ 0.05 mm
Colour fastness to light	EN ISO 105-B02 method 3	≥ 6	≥ 6	≥ 6	≥ 6	≥ 6	≥ 6	≥ 6
Resistance to chemicals	EN-ISO 26987	Very good	Very good	Very good	Very good	Very good	Very good	Very good
Dimension stability	EN-ISO 23999	≤ 0.05%	≤ 0.05%	≤ 0.05%	≤ 0.05%	≤ 0.05%	≤ 0.05%	≤ 0.05%
Indoor Air Emissions: TVOC after 28 days	EN 16516	≤ 0.01 mg/m ³	≤ 0.01 mg/m ³	≤ 0.01 mg/m ³	≤ 0.02 mg/m ³	≤ 0.02 mg/m ³	≤ 0.02 mg/m ³	≤ 0.02 mg/m ³
Life Cycle Assessment		LCA is the foundation for securing the lowest environmental impact.						
Creating better environments								
Renewable electricity		Allura is manufactured using 100% electricity from renewable sources.						
Recycled content (mass)		27%	24%	30%	33%	30%	53%	47%
Allura meets the requirements of EN 14041:2004		EN 14041:2004 0200130-DoP-105 CE	EN 14041:2004 0200130-DoP-105 CE	EN 14041:2004 0200130-DoP-105 CE	EN 14041:2004 0200131-DoP-209 CE	EN 14041:2004 0200131-DoP-209 CE	EN 14041:2004 0200132-DoP-105 CE	EN 14041:2004 0200134-DoP-909 CE
Reaction to fire	EN 13501-1	B _{fl} -s1,G,CS	B _{fl} -s1,G,CS	B _{fl} -s1,G,CS	B _{fl} -s1,L,CS	B _{fl} -s1,L,CS	B _{fl} -s1,L,CS with and without Forbo underlay	B _{fl} -s1,L,CS
Slip resistance	EN 13893	μ ≥ 0.30	μ ≥ 0.30	μ ≥ 0.30	μ ≥ 0.30	μ ≥ 0.30	μ ≥ 0.30	μ ≥ 0.30
Thermal conductivity	EN 12524	0.25 W/mK	0.25 W/mK	0.25 W/mK	0.25 W/mK	0.25 W/mK	0.25 W/mK	0.25 W/mK
Body voltage	EN 1815	≤ 2.0 kV	≤ 2.0 kV	≤ 2.0 kV	≤ 2.0 kV	≤ 2.0 kV	≤ 2.0 kV	≤ 2.0 kV

All Forbo Flooring Systems' sales organisations worldwide have a certified Quality Management System in accordance with ISO 9001. All Forbo Flooring Systems' manufacturing operations have a certified Environmental Management System in accordance with ISO 14001. The Life Cycle Assessment (LCA) of Forbo Flooring Systems' products is documented in individual Environmental Product Declarations (EPD's) which can be found on all of our websites.





ALLURA DECIBEL

Allura Decibel presents the new acoustic LVT standard. The balanced offer combines beautiful floor design with excellent performance in acoustic noise reduction (19dB) and dimensional stability. There are types of wear layer thicknesses to address every type of project; 0.8 for the project market and 0.35 for the housing market.

Looking for an even more sustainable flooring solution?

Allura decibel is also available, on demand, with an enhanced sustainability level, including bio-based PVC and a plasticizer from recycled origin. Discover what this means in practice and go to page 72 to read all about this option.

How to specify your order

Example:

When you want the weathered serene oak in Allura decibel with wear layer thickness 0.8 mm. Take the colourway number of weathered serene oak which is 5513 and add AD8 to the number.

This is how you would specify this example order:

5513 AD8	
colourway number	construction type

Large size:

When you want the large size of the weathered serene oak in Allura decibel with wear layer thickness 0.8 mm. Take the colourway number of the large size which is 5513L and add AD8 to the number.

This is how you would specify this example order:

5513L AD8	
colourway number	construction type

Herringbone:

When you want the herringbone size of the weathered serene oak in Allura decibel with wear layer thickness 0.8mm. Take the colourway number of the herringbone size which is 5513H and add AD8 to the number.

This is how you would specify this example order:

5513H AD8	
colourway number	construction type

AUTHENTIC OAK -ALLURA® decibel

Allura	smoked		pale		honey		classic		warm		ebony		Packaging
	Art. number	Size	Art. number	Size	Art. number	Size	Art. number	Size	Art. number	Size	Art. number	Size	
Decibel 0.35	5202AD3	39.4" x 7.9"	5201AD3	39.4" x 7.9"	5203AD3	39.4" x 7.9"	5204AD3	39.4" x 7.9"	5234AD3	39.4" x 7.9"	5239AD3	39.4" x 7.9"	27pcs (58.13 ft')
Decibel 0.80	5202AD8	39.4" x 7.9"	5201AD8	39.4" x 7.9"	5203AD8	39.4" x 7.9"	5204AD8	39.4" x 7.9"	5234AD8	39.4" x 7.9"	5239AD8	39.4" x 7.9"	22pcs (47.36 ft')

Herringbone version

Allura	smoked		pale		honey		classic		warm		ebony		Packaging
	Art. number	Size	Art. number	Size	Art. number	Size	Art. number	Size	Art. number	Size	Art. number	Size	
Decibel 0.35	5202HAD3	19.7" x 4.9"	5201HAD3	19.7" x 4.9"	5203HAD3	19.7" x 4.9"	5204HAD3	19.7" x 4.9"	5234HAD3	19.7" x 4.9"	5239HAD3	19.7" x 4.9"	30pcs (20.18 ft')
Decibel 0.80	5202HAD8	19.7" x 4.9"	5201HAD8	19.7" x 4.9"	5203HAD8	19.7" x 4.9"	5204HAD8	19.7" x 4.9"	5234HAD8	19.7" x 4.9"	5239HAD8	19.7" x 4.9"	24pcs (16.15 ft')



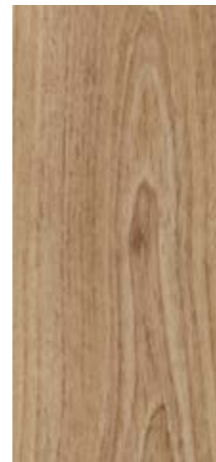
5202 | smoked authentic oak



5201 | pale authentic oak



5203 | honey authentic oak



5204 | classic authentic oak



9573 | natural twill, 5234 | warm authentic oak



5234 | warm authentic oak



5239 | ebony authentic oak



5239H | ebony authentic oak, 5202H | smoked authentic oak, 9109 | nero perlino

SERENE OAK -ALLURA® decibel

Allura	sun-bleached		weathered		amber		Packaging
	Art. number	Size	Art. number	Size	Art. number	Size	
Decibel 0.35	5503AD3	100 x 20 cm	5513AD3	100 x 20 cm	5534AD3	100 x 20 cm	27pcs (5.40m ²)
Decibel 0.80	5503AD8	100 x 20 cm	5513AD8	100 x 20 cm	5534AD8	100 x 20 cm	22pcs (4.40m ²)

Herringbone version

Allura	sun-bleached		weathered		amber		Packaging
	Art. number	Size	Art. number	Size	Art. number	Size	
Decibel 0.35	5503HAD3	50 x 12,5 cm	5513HAD3	50 x 12,5 cm	5534HAD3	50 x 12,5 cm	30pcs (1.88m ²)
Decibel 0.80	5503HAD8	50 x 12,5 cm	5513HAD8	50 x 12,5 cm	5534HAD8	50 x 12,5 cm	24pcs (1.5m ²)

Large size

Allura	sun-bleached		weathered		amber		Packaging
	Art. number	Size	Art. number	Size	Art. number	Size	
Decibel 0.35	5503LAD3	150 x 20 cm	5513LAD3	150 x 20 cm	5534LAD3	150 x 20 cm	17pcs (5.1m ²)
Decibel 0.80	5503LAD8	150 x 20 cm	5513LAD8	150 x 20 cm	5534LAD8	150 x 20 cm	14pcs (4.2m ²)



5503H | sun-bleached serene oak, 5534H | amber serene oak



5503 | sun-bleached serene oak



5513 | weathered serene oak



5534 | amber serene oak



5513 | weathered serene oak

ANTIQUÉ OAK

Allura	ivory	natural	greige				
	Art. number	Art. number	Art. number	Size	Size	Size	Packaging
Decibel 0.35	5401AD3	5404AD3	5432AD3	100x16,6cm	100x16,6cm	100x16,6cm	30pcs (4,98m²)
Decibel 0.80	5401AD8	5404AD8	5432AD8	100x16,6cm	100x16,6cm	100x16,6cm	24pcs (3,98m²)



5401 | ivory antique oak 5404 | natural antique oak 5432 | greige antique oak



5401 | ivory antique oak

SMOOTH OAK

Allura	golden	dune	taupe	smoke			
	Art. number	Art. number	Art. number	Art. number	Size	Size	Packaging
Decibel 0.35	5313AD3	5303AD3	5323AD3	5301AD3	120x20cm	120x20cm	27pcs (5,40m²)
Decibel 0.80	5313AD8	5303AD8	5323AD8	5301AD8	120x20cm	120x20cm	22pcs (4,40m²)



5313 | golden smooth oak 5303 | dune smooth oak 5323 | taupe smooth oak 5301 | smoke smooth oak



5101 | winter harvest oak

HARVEST OAK

Allura	pure	golden	winter				
	Art. number	Art. number	Art. number	Size	Size	Size	Packaging
Decibel 0.35	5123AD3	5103AD3	5101AD3	100x16,6cm	100x16,6cm	100x16,6cm	30pcs (4,98m²)
Decibel 0.80	5123AD8	5103AD8	5101AD8	100x16,6cm	100x16,6cm	100x16,6cm	24pcs (3,98m²)



5123 | pure harvest oak 5103 | golden harvest oak 5101 | winter harvest oak



5323 | taupe smooth oak

SLABSTONE

Allura	neutral		silt		fog		smoke		Packaging
	Art. number	Size	Art. number	Size	Art. number	Size	Art. number	Size	
Decibel 0.35	6603AD3	50 x 50 cm	6604AD3	50 x 50 cm	6601AD3	50 x 50 cm	6602AD3	50 x 50 cm	20pcs (5.0m ²)
Decibel 0.80	6603AD8	50 x 50 cm	6604AD8	50 x 50 cm	6601AD8	50 x 50 cm	6602AD8	50 x 50 cm	16pcs (1.5m ²)

Large size

Allura	neutral		silt		fog		smoke		Packaging
	Art. number	Size	Art. number	Size	Art. number	Size	Art. number	Size	
Decibel 0.80	6603LAD8	100 x 100 cm	6604LAD8	100 x 100 cm	6601LAD8	100 x 100 cm	6602LAD8	100 x 100 cm	1 pcs (1m ²)



6603 | neutral slabstone



6601 | fog slabstone



6604 | silt slabstone



6602 | smoke slabstone



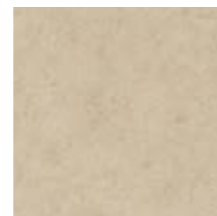
6602 | smoke slabstone

URBAN CONCRETE

Allura	clay		desert		ash		pewter		basalt		Packaging
	Art. number	Size	Art. number	Size	Art. number	Size	Art. number	Size	Art. number	Size	
Decibel 0.35	4623AD3	50 x 50 cm	4633AD3	50 x 50 cm	4622AD3	50 x 50 cm	4632AD3	50 x 50 cm	4639AD3	50 x 50 cm	20pcs (5.0m ²)
Decibel 0.80	4623AD8	50 x 50 cm	4633AD8	50 x 50 cm	4622AD8	50 x 50 cm	4632AD8	50 x 50 cm	4639AD8	50 x 50 cm	16pcs (1.5m ²)



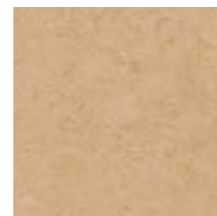
4639 | basalt urban concrete



4623 | clay urban concrete



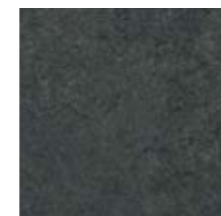
4622 | ash urban concrete



4633 | desert urban concrete



4632 | pewter urban concrete



4639 | basalt urban concrete

PERLINO

Allura	creta		sabbia		bianco		grigio		nero		Packaging
	Art. number	Size	Art. number	Size	Art. number	Size	Art. number	Size	Art. number	Size	
Decibel 0.80	9104AD8	50 x 50 cm	9103AD8	50 x 50 cm	9110AD8	50 x 50 cm	9101AD8	50 x 50 cm	9109AD8	50 x 50 cm	16pcs (1.5m ²)



9104 | creta perlino



9103 | sabbia perlino



9110 | bianco perlino



9101 | grigio perlino



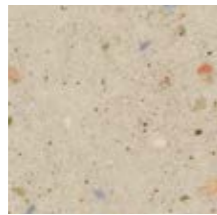
9109 | nero perlino



9103 | sabbia perlino

GRAVELSTONE

Allura	beige		tan		grey		black		Packaging
	Art. number	Size	Art. number	Size	Art. number	Size	Art. number	Size	
Decibel 0.80	9403AD8	50 x 50 cm	9413AD8	50 x 50 cm	9401AD8	50 x 50 cm	9409AD8	50 x 50 cm	16pcs (1.5m ²)



9403 | beige gravelstone



9401 | grey gravelstone



9413 | tan gravelstone



9409 | black gravelstone



9413 | tan gravelstone



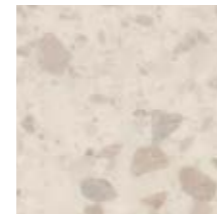
9211 | nimbus terrazzo

TERRAZZO

Allura	sand		terra		nimbus		opal		Packaging
	Art. number	Size	Art. number	Size	Art. number	Size	Art. number	Size	
Decibel 0.80	9213AD8	50 x 50 cm	9243AD8	50 x 50 cm	9211AD8	50 x 50 cm	9212AD8	50 x 50 cm	16pcs (1.5m ²)



9213 | sand terrazzo



9211 | nimbus terrazzo



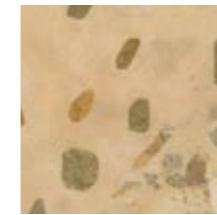
9243 | terra terrazzo



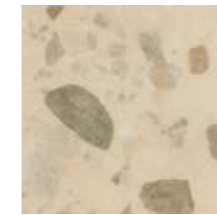
9212 | opal terrazzo

POMPEII

Allura	bronze		sepia		chalk		Packaging
	Art. number	Size	Art. number	Size	Art. number	Size	
Decibel 0.80	9313AD8	50 x 50 cm	9303AD8	50 x 50 cm	9301AD8	50 x 50 cm	16pcs (1.5m ²)



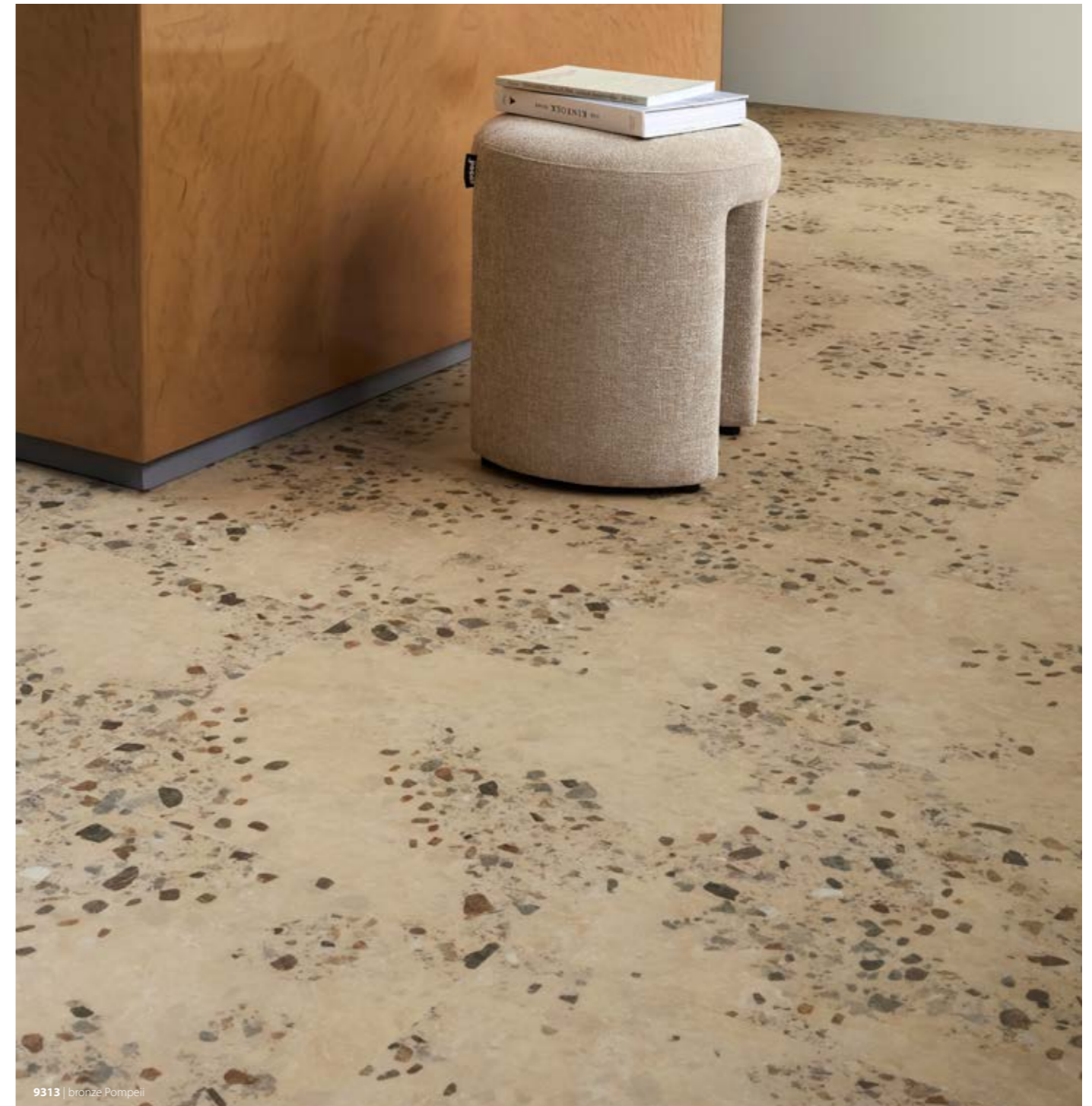
9313 | bronze Pompeii



9303 | sepia Pompeii



9301 | chalk Pompeii



9313 | bronze Pompeii

TWILL -ALLURA® decibel

Allura	peach		natural		taupe		Packaging
	Art. number	Size	Art. number	Size	Art. number	Size	
Decibel 0.80	9563AD8	50 x 50 cm	9573AD8	50 x 50 cm	9564AD8	50 x 50 cm	16pcs (1.5m ²)



9563 | peach twill



9573 | natural twill



9564 | taupe twill

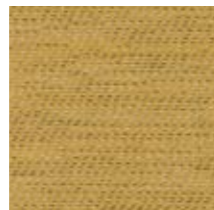


9569 | anthracite twill

Allura	raspberry		ginger		pistachio		blue		anthracite		Packaging
	Art. number	Size	Art. number	Size	Art. number	Size	Art. number	Size	Art. number	Size	
Decibel 0.80	9566AD8	50 x 50 cm	9565AD8	50 x 50 cm	9568AD8	50 x 50 cm	9567AD8	50 x 50 cm	9569AD8	50 x 50 cm	16pcs (1.5m ²)



9566 | raspberry twill



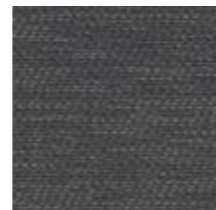
9565 | ginger twill



9568 | pistachio twill



9567 | blue sky twill



9569 | anthracite twill



9567 | blue sky twill

ENHANCED SUSTAINABLE OPTION WITH ALLURA DECIBEL B+

We continuously work to reduce the environmental impact of our products. Allura decibel is already designed for a circular future: it can be installed with a tackifier for easier reuse or recycling, is produced using 100% renewable electricity, and meets the highest standards for low VOC emissions.

Going further with Allura decibel b+

For projects seeking an even more sustainable choice, there is an on demand option which includes bio-based PVC, plus a plasticizer from recycled origin. We call this Allura decibel b+.

Circular and renewable raw materials

Allura decibel b+ contains 31% recycled material. Part of the recycled content comes from recycled post production and installation waste of PVC flooring and filler from a recycled source. The additional use of recycled plasticizer (made from, e.g. recycled PET bottles) is unique for Allura decibel b+. Additionally, a bio-based PVC is used instead of a tradition fossil-based PVC. This increases the amount of renewable materials and reduces the impact on the environment even further. For both the recycled plasticizer and the bio-based PVC, a mass balance approach is used.

How does it work?

Bio-based materials originate from renewable, natural raw materials. When these materials are used in our production process, the product looks and performs exactly the same, the only difference is the origin of the raw materials. In mass-balance manufacturing, traditional PVC and bio-based PVC are not kept separate. Instead, they enter the same production stream. By purchasing the b+ version, you increase the share of bio-based content allocated within this production process. The same methodology is used for the recycled plasticizer.

This means:

- The more b+ products our customers choose,
- the more bio-based and recycled raw materials we can introduce,
- leading to a continued reduction of fossil resources in our supply chain.

A smart choice for people and planet

By choosing Allura decibel b+, you actively support the transition to renewable materials and help to reduce the use of fossil resources and the impact of CO₂-emissions on the planet. Together, we can move towards healthier buildings, lower emissions, and a more circular flooring industry.



THE PILLARS OF OUR AMBITION

Three words are at the foundation of everything we do:

Transparency, circularity and renewability

PRODUCT DEVELOPMENT AND DESIGN (PRODUCT DEVELOPMENT WITH CIRCULARITY AND USERS IN MIND)

- Allura decibel is installed with tackifier, increasing the possibilities for future end of life recycling.
- Allura is a 100% phthalate free vinyl
- Fully transparent choices by using the EPD's which are 3rd party verified, using only 100% safe and traceable REACH compliant materials
- All Allura products are manufactured with 100% renewable electricity and have very low VOC emissions emissions that are below the industry average
- Allura decibel is made with multiple specifications, fit for all kinds of purpose to meet the exact usage and maintenance needs for the application

SOURCING AND RAW MATERIALS (MAXIMIZING THE USE OF SUSTAINABLE AND RENEWABLE RAW MATERIALS)

- Allura decibel contains recycled content which we intend to increase over time; but without compromise on the performance of the product. The actual content is published in our EPD's
- Choosing Allura decibel b+ with bio-based and recycled material contributes to a reduction of fossil raw material usage
- Controlled supply chain certification – ISO 14001 and ISO 9001 standards and SA8000 for ethical supply chain
- Use of recycled materials back into our own products, all our raw materials meet the strictest health requirements

PRODUCTION AND DISTRIBUTION (CARBON NEUTRAL AND ZERO WASTE PRODUCTION)

- Allura production is based on the zero waste principles. All production waste goes back into our products
- We evaluate the best way to reuse waste so it does not have any impact on product performance of our high quality
- Allura is produced in an environment where substantial reductions of CO₂ emissions have been achieved and additional improvements are planned toward our ambition to be net-zero by 2050 at the latest

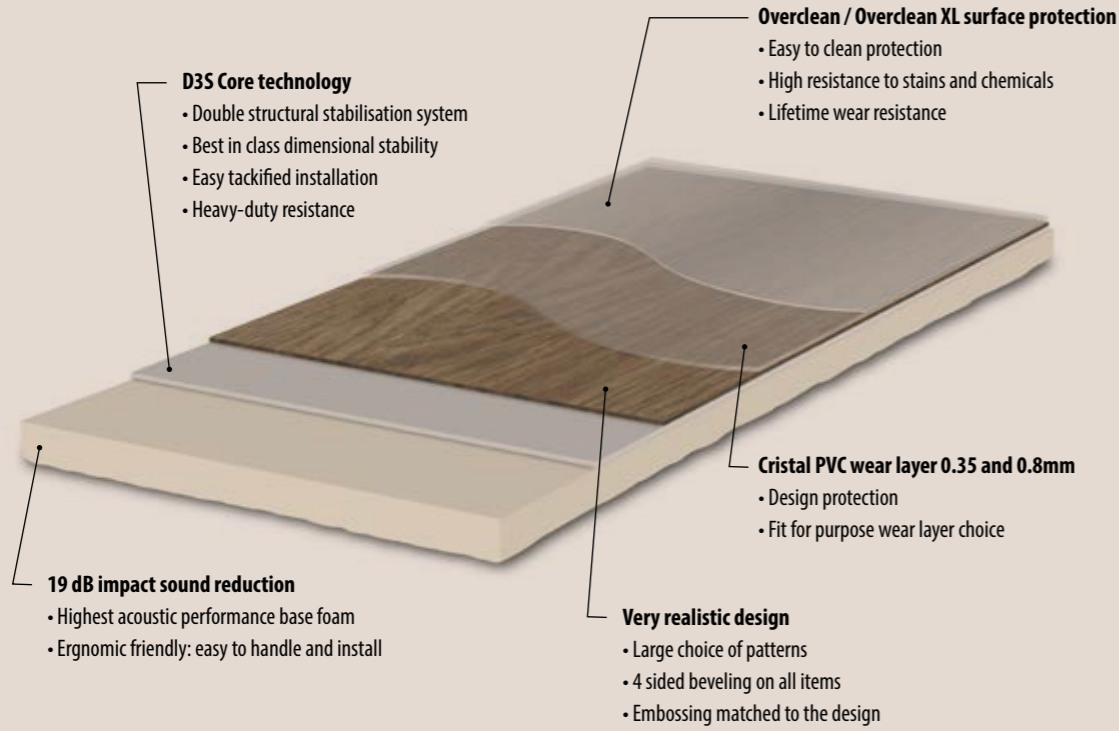
LONG LASTING & EASY TO MAINTAIN (HIGHLY DURABLE AND FIT-FOR-PURPOSE SOLUTIONS)

- Modular solutions such as Allura decibel deliver reductions on installation time and waste, saving money and positively impacting the environment.
- 100% functional product build up, including proven PUR protection for long lasting performance, even under demanding circumstances
- Forbo Flooring Systems offers compatible Coral entrance flooring to keep Allura cleaner for longer and reduce cleaning by up to 65%

RECYCLING AND END-OF-LIFE (RECREATING VALUE AT THE END)

- Back to the floor projects – returned floors can be recycled to close the materials loop, vinyl is a very suitable material for at least recycling up to 10x
- Every year our portfolio of products with the potential to be easily recycled in the future is growing. Allura decibel is part of this trend like most Allura products: easy to install and remove with traceable materials

allura® decibel



5401 | ivory antique oak



Technical specifications

Allura decibel meets the requirements of EN ISO 11638

		Allura decibel 0.35 / b+	Allura decibel 0.8 / b+	
	Total thickness	EN-ISO 24346	3.15 mm	4.00 mm
	Wearlayer thickness	EN-ISO 24340	0.35 mm	0.80 mm
	Domestic use	EN-ISO 10874	23	23
	Commercial/light industrial use	EN-ISO 10874	32	34 / 42
	Tile size	EN-ISO 24342	50 x 50 cm	50 x 50 cm / 100 x 100 cm
	Plank size	EN-ISO 24342	50 x 12.5 cm / 100 x 16.6 cm / 100 x 20 cm / 120 x 20 cm / 150 x 20 cm	50 x 12.5 cm / 100 x 16.6 cm / 100 x 20 cm / 120 x 20 cm / 150 x 20 cm
	Packaging per carton tiles		50 x 50 cm: 20 per box (5 m ²)	50 x 50 cm: 16 per box (4 m ²) 100 x 100 cm (on request): 100 per pallet (100 m ²)
	Packaging per carton planks		50 x 12.5 cm: 30 per box (1.875 m ²) 100 x 16.6 cm: 30 per box (4.98 m ²) 100 x 20 cm: 27 per box (5.40 m ²) 120 x 20 cm: 19 per box (4.56 m ²) 150 x 20 cm: 17 per box (5.10 m ²)	50 x 12.5 cm: 24 per box (1.5 m ²) 100 x 16.6 cm: 24 per box (3.98 m ²) 100 x 20 cm: 22 per box (4.40 m ²) 120 x 20 cm: 16 per box (3.84 m ²) 150 x 20 cm: 14 per box (4.20 m ²)
	Total weight	ISO 23997	2300 g/m ²	3600 g/m ²
	Wearlayer binder content	EN-ISO 10582	Type 1	Type 1
	Castor chair continuous use	ISO 4918	Yes	Yes
	Slip resistance	DIN51130	R10	R10
	Acoustical impact noise reduction	EN-ISO 717-2	19dB	19dB
	Residual indentation - typical value	ISO 24343-1	0.12 mm	0.11 mm
	Light fastness	ISO 105-B02	≥7	≥7
	VOC emissions	EN 16516	0,01g/m ³	0,03g/m ³
	Resistance to chemicals	EN-ISO 26987	Good	Good
	Dimension stability (after exp. to heat)	EN-ISO 23999	≤ 0.02%	≤ 0.02%
	Surface treatment		Overclean	Overclean XL
	Creating better environments			
	Renewable electricity		Allura decibel is manufactured using 100% energy from renewable sources.	
	Recycled content		Allura decibel 20% recycled content Allura decibel b+ 31% recycled content (mass balance)	
	Allura meets the requirements of EN 14041		EN 14041 CE 0200859-DoP-010	EN 14041 CE 0200859-DoP-010
	Reaction to fire	EN 13501	B _s -s1, L, NCS	B _s -s1, L, NCS
	Slip resistance	EN 13893	μ > 0.30	μ > 0.30
	Thermal conductivity	EN 12524	0.25 W/mK	0.25 W/mK
	Body voltage	EN 1815	≤ 2kV	≤ 2kV

All Forbo Flooring Systems' sales organisations worldwide have a certified Quality Management System in accordance with ISO 9001.
All Forbo Flooring Systems' manufacturing operations have a certified Environmental Management System in accordance with ISO 14001.
The Life Cycle Assessment (LCA) of Forbo Flooring Systems' products is documented in individual Environmental Product Declarations (EPD's) which can be found on all of our websites.



04/2026

creating better environments





**GOING
ROUND**
MOVING FORWARD



Many of the flooring systems and building materials used today have an impact on the planet. The right flooring can help lower emissions and reduce waste – that's why we want to contribute with more sustainable solutions.

In the development of our Allura collections we continuously work to increase the sustainability of our portfolio. And through it all, we use life cycle assessments (LCAs) to guide our journey, ensuring we make the right decisions continuously on our products and contribute to a circular economy. And we always make sure that our Environmental Product Declarations (EPDs) are third-party certified – that way we can ensure full transparency.

THE PILLARS OF OUR AMBITION

Transparency

Transparency is the foundation for making the right circular choices. With life cycle assessments as our constant guide in doing right, we continue to lead the industry towards new environmental standards.

Circularity

True circularity is to go all the way around. We think circular in everything we do. We work on creating products that keep the end in mind – and do this throughout our design process and choice of materials.

Renewability

Renewable materials are an important part of a fully circular future. We want to be the trusted partner for fully circular flooring solutions made with renewable raw materials. We know that the recycling of flooring is important. And we know that it is crucial to achieve carbon neutrality.



We are guided by five themes that are at the foundation of our ambition.

PRODUCT DESIGN WITH CIRCULARITY AND USERS IN MIND

- Allura Flex and Allura Decibel are installed with tackifier, easy to recycle end of life and preparing for circular future
- Allura is a 100% phthalate free vinyl
- Fully transparent choices by using the EPD's which are 3rd party verified, using only 100% safe and traceable REACH compliant materials
- All Allura products are manufactured with 100% green electricity and have very low product emissions that are below the industry average
- Allura is made with multiple specifications, fit for all kinds of purpose to meet the exact usage and maintenance needs for the application



MAXIMIZING THE USE OF SUSTAINABLE & RENEWABLE FLOORING MATERIALS

- Allura contains recycled content which we intend to increase over time; but never will influence the performance of the product. The actual content is published in our EPD's
- Controlled supply chain certification – ISO 14001 and 9001 standards and SA8000 for ethical supply chain
- Use of recycled materials back into our own products, all our raw materials meet the strictest health requirements

CARBON NEUTRAL AND ZERO WASTE PRODUCTION

- Allura production is based on the zero waste principles. Everything that is waste goes back into our products
- We evaluate the best way to reuse waste so it does not have any impact on product performance of our high quality
- Allura is produced in an environment where substantial reductions of CO₂ have been achieved and additional improvements are planned

HIGHLY DURABLE AND FIT-FOR-PURPOSE SOLUTIONS

- Modular installations like Allura can save time, installation waste, money and the environment
- 100% functional product build up, including proven PUR protection for long lasting performance, even under demanding circumstances
- Forbo Flooring offers compatible Coral entrance flooring to keep Allura cleaner for longer and reduce cleaning by up to 65%

RECREATING VALUE AT THE END

- Back to the floor projects – returned floors can be recycled to close the materials loop, vinyl is a very suitable material for at least recycling up to 10x
- Every year our portfolio of circular ready solutions is growing. All Allura products are made of traceable materials and most constructions are easy to install and remove to make future recycling possible.



DYNAMICS OF A BUILDING

There is an increase in demand for transitional environments; spaces need to be able to evolve and adapt to new functions. And these constantly changing spaces require walls and floors that can perform as a chameleon, with timeless colours and basic materials.

GLOBAL COLOUR CARD

These trends and changing mindsets inspired the Forbo Design team to develop a Global Colour Card. Instead of defining segment-related colour ranges, the team analysed the different dynamics taking place within a building. The Global Colour Card framework represents the dialogue between the selected colours and the way they are grouped together to set the tone, rather than the individual colour. As it is the overall expression of the selected colours that represents the defined atmosphere, the individual colours can easily be updated when needed whilst keeping the total feel intact.

FIVE THEMES

The following themes were identified; Receiving, Moving, Connecting, Concentrating and Recharging, with each one referring to the different identities a space can have. They express a certain state of a person or an activity taking place within the building.



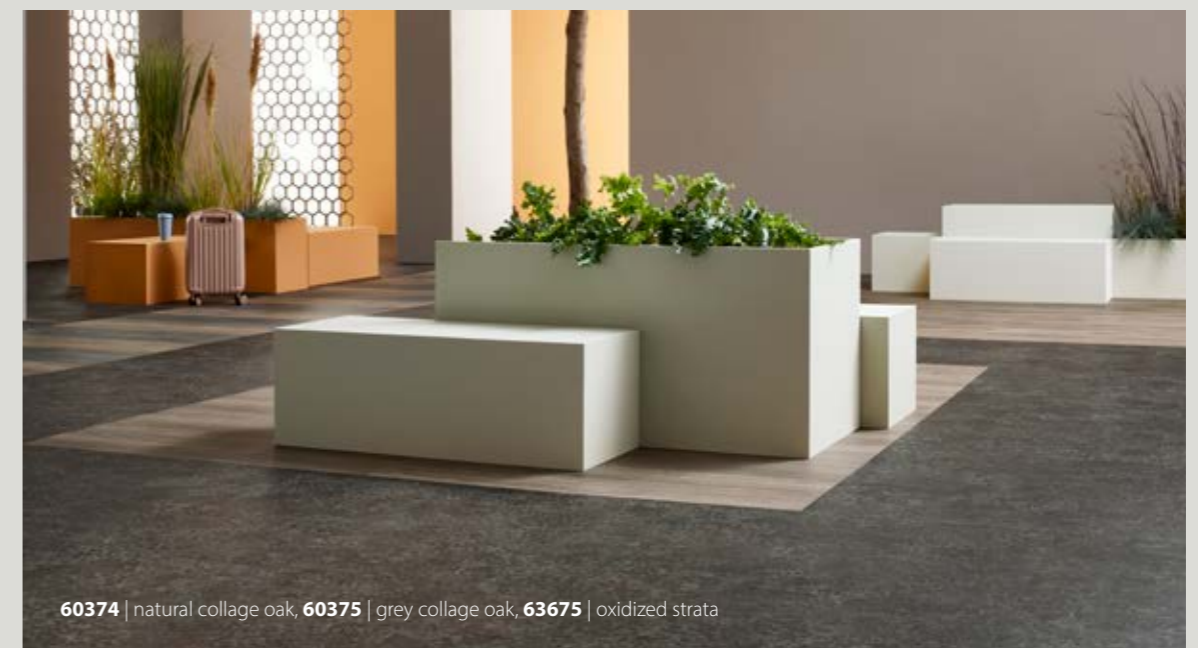
Receiving

The theme 'Receiving' describes the scenario of a person entering a building; making a transition from the outdoors to the indoors. A space where one should feel welcome and is accessible and transparent as first impressions are key. This is the area of the building that should clearly represent the 'feel' of the brand and meet the expectations of the client to make them feel comfortable and at home.



Moving

'Moving' represents the move towards the destination and the purpose of why someone is in a building - getting from A to B, the reception desk to the person you want to meet, or the transition between departments, for example. Orientation is priority, so these areas need to be clear to read. The space needs to be legible to aid with wayfinding.



Connecting

The dynamics of a 'Connecting' space signifies areas where you will connect with other people within a building, such as open public spaces for spontaneous interactions or semi open spaces for dialogues or brainstorm. These areas allow for an extrovert energy boost or to give the brain time out. Here, colours and materials can be more complicated, such as layered colour schemes with unexpected combinations, to spark interest and curiosity and to inspire thoughts.



6603 | neutral slabstone, 5432 | greige antique

Recharging

Lastly, 'Recharging' is connected to mindfulness and describes relaxed environments where people can let their guard down and be themselves. This area of the building should reflect a home-like setting, to allow for people to refresh and recharge, and to enable a feeling of temporary ownership. Light and fresh shades should be used here, as they are weightless and crisp, encouraging people to take a break, breathe and escape.



60288 | light giant oak, 60284 | natural giant oak

Concentrating

For 'Concentrating', the attention is on the individual and avoiding unwelcome distractions. These are secluded spaces for privacy and focus and while concentrating, people need a muted ambiance and good acoustic properties. Therefore, colour palettes in this area of a building should be subtle and quiet.



63666 | indigo ash, 63749 | blue clouds, 60084 | blue clouds

With this approach we are able to offer the possibility to integrate a variety of our flooring products in a beautiful way and ensure that the floor will contribute to creating a positive experience. This Allura collection offers it all, from mixing and matching to keeping it calm and all in one shade. In the end the choice is yours.



62523 | grigio concrete 62418 | charcoal concrete 60374 | natural college oak

ALLURA FLOORING COMBINATIONS

This Allura collection is unique, offering many designs which are available in all installation formats; glue down, tackified and loose lay. This allows combining in projects where different subfloors or different areas require a different installation method but you can still choose the same design. For truly integrated flooring solutions our Allura LVT collection can also be combined with other flooring products from our portfolio. Here you see a short overview.



63843 | dreamy sky, 63749 | blue clouds, 3405 | Tessera cloudscape sunset sky, 3407 | Tessera cloudscape april shower

allura® & tessera

In areas where you need improved acoustics and comfort underfoot or where you want to highlight certain areas like a breakout room, you can play with Allura and Tessera. Use your imagination and design the ultimate office, leisure or hospitality project with these two products. Carpet tiles are renowned for their aesthetic styling and outstanding performance in the most demanding heavy traffic environments. Forbo's Tessera flooring offers a wide portfolio in both tile and plank sizes. Different tufting techniques like cut and loop piles or random lay, batchless, create different looks.

allura® & flotex

Whether you want Flotex as a highlight feature in your floor design or really combine it in your design, you can choose. Flotex is available in sheet, planks and tiles. The planks have the same installation height as our Allura Flex (FL1), allowing a smooth transition from one to the other without the need for transition strips. Flotex is a unique textile floor covering that combines the hard wearing and durable characteristics of a resilient floor with the quality, warmth and comfort of a carpet. Flotex is a strong and hygienic floor, and offers superior cleaning performance to other textile flooring.



60300 | central oak, s545022 | canyon limestone

allura® & coral

Every floor needs protection from dirt and moisture from outside. With our Coral entrance flooring collection this can be an integrated design area that complements your entrance and integrates with the floor behind it. Entrance flooring is fundamental to modern building design. A well designed entrance flooring system will prevent dirt and moisture from being tracked in and thereby prolongs the life of interior flooring, reduces cleaning & maintenance costs and the potential for slip injuries.



Coral brush 5288 | racing green, Allura decibel 9243 | terra terrazzo

HOW CAN WE HELP?

As you have seen the choice in Luxury Vinyl Tiles within the Forbo Flooring portfolio is huge. When you want to learn more, order samples or see the designs in your own room, please use one of the options below.

Allura on the website

You can find all designs, patterns and colours on our website.

www.forbo-flooring.com/allura

Floorplanner

Would you like to visualize the floor you have in mind in a specific room or even your own project? Please go to our floorplanner and play around with designs and images.

www.forbo-flooring.com/floorplanner

Sample service

Would you like to receive a sample, please go to our website or contact our local customer service.

Installation, cleaning & maintenance

On our website you will find videos, PDF downloads and more to help you find the best way to install Allura or to learn how you clean and maintain your floor. Our technical teams are just a phonecall away should you still have questions.

www.forbo-flooring.com/downloadsallura

Inspiration & references

Would you like to see how others apply Allura, then please have a look at the 'Inspiration & references' part of our website.

www.forbo-flooring.com/references



BIM files

Should you want to integrate the floors in your own technical drawings we have BIM data for all floors for you available.

www.forbo-flooring.com/BIM

Protect your floor

As one of the elements to keep your floor for longer is the use of a good entrance system, we kindly refer to our entrance products.

www.forbo-flooring.com/entranceflooring



Contact

Should you have remaining questions, please don't hesitate to contact us via;

www.forbo-flooring.com/contact or sent an email to question@forbo.com



Find us on



Forbo Flooring

P.O. Box 13
1560 AA Krommenie
The Netherlands
T: +31 75 647 74 77
F: +31 75 647 77 01
question@forbo.com
www.forbo-flooring.com

247752/01042026

creating better environments



FLOORING SYSTEMS